

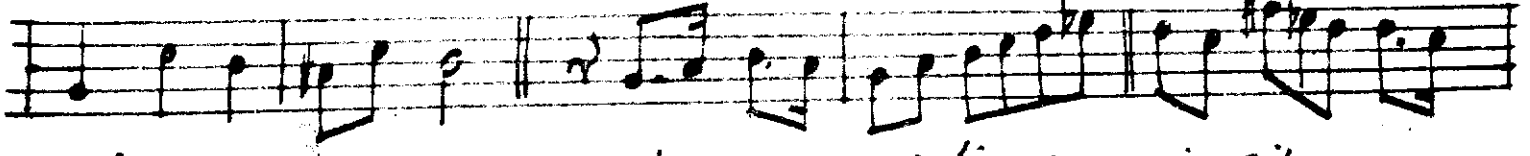
Kihail Erkatun  
Ehem Qayyer

# Bayati yuruk semai Sinan: Nikailein

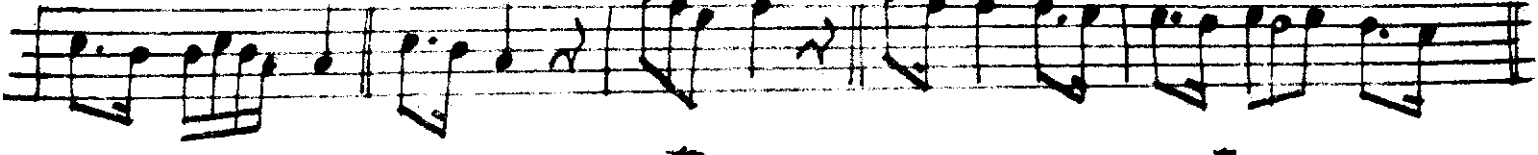
sa na se ni Ben miñ Rñ' ye Fa



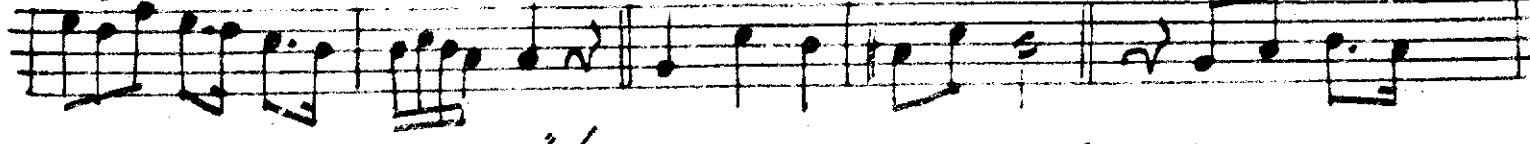
sa sa sa hi



Bi san Jim ah sev dim se ni Bil



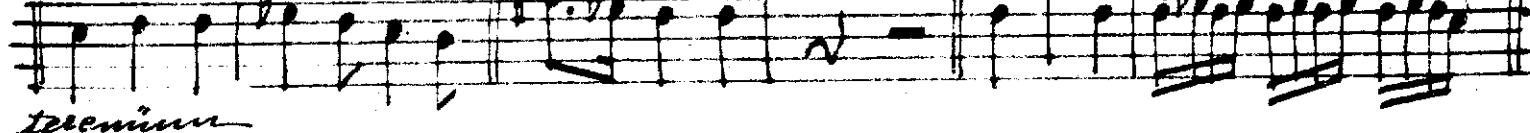
mez Lik ; le o



öd le Re yan dim ah

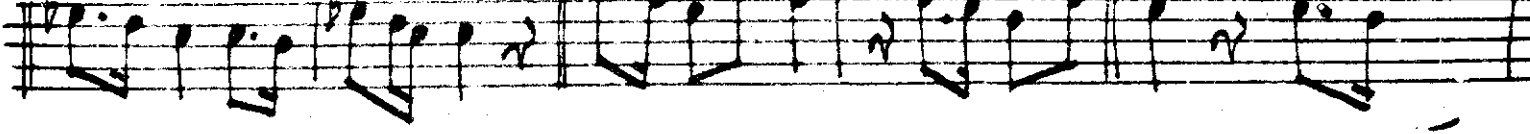


gel gel gel

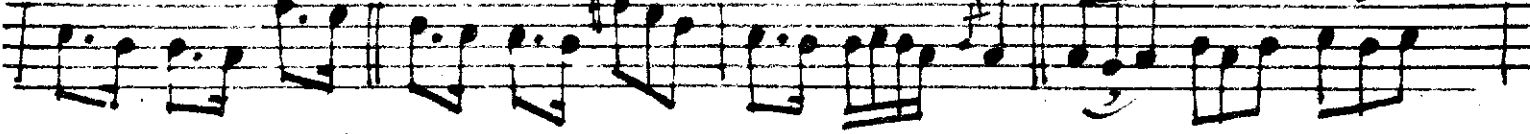


teremün

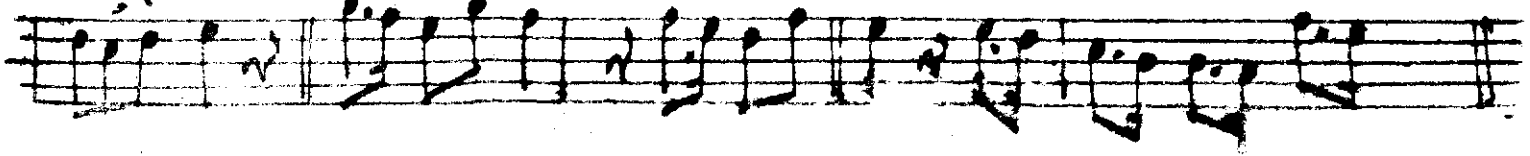
gel ah ah ah



gel iş ve Ba zim



dost dost dost



oel çə RE sə zim vay tə  
 dir Li tə dir Li tə dir Li ten nen  
 vay tə dir Li tə dir Li  
 tə dir Li ten vay  
 of of of  
 Ben de ne rahm ey le oel  
 ey le oel oel  
 oel oel

3

gel mes <sup>3</sup> T1 AB zim <sup>3</sup> <sup>3</sup> <sup>3</sup>  
 sev dim se ni <sup>3</sup> <sup>3</sup> mez <sup>3</sup> LİK i Le  
 0 0  
 od, le RE yan dim <sup>3</sup>  
 can; se go <sup>3</sup> cev Rū' ce Fā, <sup>3</sup>  
 mızan <sup>3</sup> <sup>3</sup> se nın ol  
 sun <sup>3</sup> <sup>3</sup> can i se go Rū' <sup>3</sup>  
 cev Rū' ce Fā, <sup>3</sup> <sup>3</sup> <sup>3</sup>  
 se nın ol sun <sup>3</sup>

4



cana seni ben mihrivefa sakili sandura  
 sevdin seni kılmeçlik ile odlara gandum  
 ah gel gel teremün  
 can ise arız cerrücepadan seim o bür  
 ben mihrneti kicran ile camudan usandım


 inşık ad